

# Melting

MF Induction Furnace Type IFM

[www.abpinduction.com](http://www.abpinduction.com)

**ABP** | PEOPLE.  
INDUCTION | TECHNOLOGY.  
SUCCESS.

# MF Induction Furnace

## Type IFM

### Available systems

- meets requirements for melting ferrous and non-ferrous alloys
- 8.000 – 65.000 kg capacity (related to cast iron)
- power supplies between 1 MW and 42 MW available

### Enhanced safety

- Improved ground-fault detection system
- Automatic test of bath-grounding
- Automatic reactivation of detection system after manual deactivation
- Automatic self-test
- Furnace coil designed as headgehog-coil to avoid breakthroughs



### Coil Design

- Long lifetime, based on rectangular copper profile
- Segmental technology allows “breathing” of the coil
- Low energy consumption
- Headgehog coil for higher safety

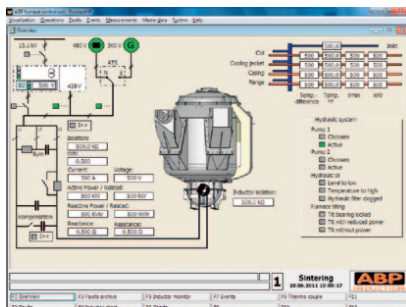


### Furnace Design

- Open design for easy maintenance
- Water-cooled magnetic yokes
- Separate furnace head for easy exchange reduces downtimes
- Segmental technology
- Pouring spout in tilting axis of the furnace to avoid moving pouring stream
- Low noise generation
- Optimized fume-extraction with ABP ECOTOP®-hoods

## Meltprocessor PRODAPT® - Advanced

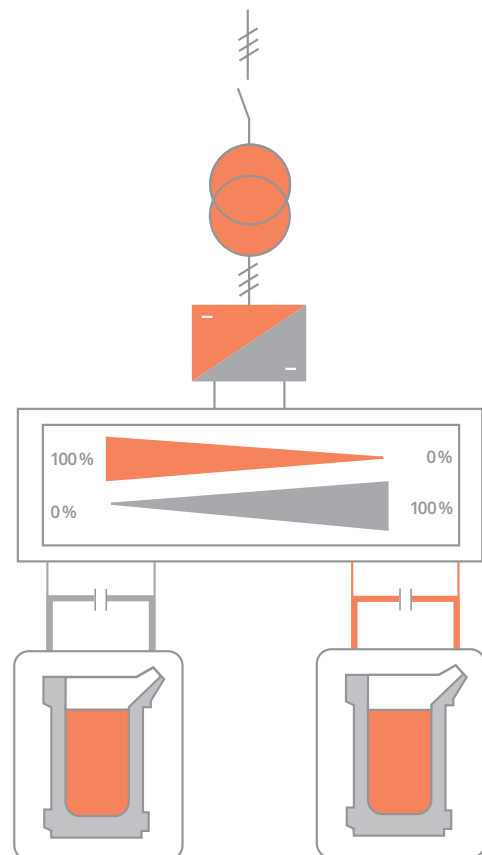
- PLC-based
- Calculation of energy request according to the furnace content
- Control of energy supply for melting and holding operation, as well as for cold-start and sintering
- Monitoring and visualization of operation data and conditions
- System monitoring and alarm function
- Reporting function
- Data exchange with SCADA systems possible



Meltprocessor PRODAPT®

## 2 furnaces, 1 converter – TWIN-POWER® principle

- Converter power freely distributable between both furnaces
- Melting in one furnace and simultaneously sintering or holding in the other possible
- Improved usage of the converter
- Lower maintenance costs
- Lower investment costs compared to separated power supplied



TWIN-POWER® principle



# Type IFM

## Advantages at a glance

- For ferrous and non-ferrous metals
- For high melt performance
- High reliability and availability
- Low energy consumption
- High operational safety
- Maintenance friendly design
- Low life cycle costs



# Your Contacts

## GERMANY

ABP Induction Systems GmbH  
Kanalstrasse 25  
44147 Dortmund  
Phone: +49 (0) 231 - 997 - 0  
Fax: +49 (0) 231 - 997 - 2293

## RUSSIA

ABP Induction Systems GmbH  
Branch Office  
Ryazanski prospect, 75/4  
109456 Moscow  
Phone: +7 (495) 620 57 26  
Fax: +7 (495) 620 57 26

## INDIA

ABP Induction Systems Pvt. Ltd.  
455, Manjusar G.I.D.C. Industrial Area Savli  
391770, Vadodara  
Phone: +91 2667 264808/809  
Fax: +91 2667 264808/810

## CHINA

ABP Induction Systems (Shanghai) Co. Ltd.  
No.118, Lane 289 Fulian II Rd.  
Baoshan District,  
Shanghai 201906  
Phone: +86 (0) 21 - 5639 1278  
Fax: +86 (0) 21 - 5639 0822

## USA

ABP Induction LLC  
1460 Livingston Ave.  
North Brunswick, NJ 08902  
Phone: +1 732 - 932 - 6400  
Fax: +1 732 - 828 - 7274

## MEXICO

ABP Induction Systems SRL de CV  
Priv. La Puerta 2882-4  
Parque Ind. La Puerta  
Santa Catarina, N.L. 66350  
Phone: +52 81 8390 - 2775  
Fax: +52 81 8390 - 2774

## SOUTH AFRICA

ABP Induction Furnaces (PTY) Ltd.  
77 Heidelberg Rd.  
City Deep/Johannesburg  
Phone: +27 (0) 11 623 1814/17  
Fax: +27 (0) 11 623 1809

## SWEDEN

ABP Induction AB  
Spännarhyttans Ind. område  
738 92 Norberg  
Phone: +46 223 23135  
Fax: +46 223 21429

## THAILAND

ABP Induction Ltd.  
80/1 Moo 11, Phaholyotin Road  
Tambol Klong Nueng  
Amphur Klong Luang  
Pathumthanee 12120  
Phone: +66 25 29 34 57  
Fax: +66 25 29 34 84